

# Wall Coping

Wall coping adds the finishing touch to your retaining wall system. Available in split-face and tumbled finish, these rectangular pieces can be fitted for any straight or curved wall. Coping can also be used to add beauty and elegance to steps and pools.



## SPECIFICATIONS



### Tumbled

225mm x 325mm x 75mm  
(8-7/8" x 12-7/8" x 2-7/8")



### Split-Face

325mm x 600mm x 75mm  
(12-7/8" x 23-5/8" x 2-7/8")

## COLOURS



Chestnut Blend



Chestnut Blend (T)



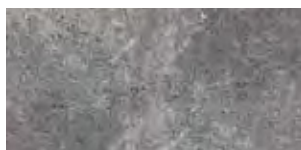
Colonial Buff Blend



Colonial Buff Blend (T)



Pewter Blend



Pewter Blend (T)



Terra Cotta Blend



Terra Cotta Blend (T)



Natural\*

\*Available only in split-face coping. (T) Tumbled